



Canyon Golf Rd. Water Main Extension Project
Solicitation Number: CO-00395
Job No.: 20-7004

ADDENDUM 3
September 21, 2021

To Bidder of Record:

This addendum, applicable to work referenced above, is an amendment to the bid proposal, plans and specifications and as such will be a part of and included in the Contract Documents. Acknowledge receipt of this addendum by entering the Addendum number and issue date on the space provided in submitted copies of the bid proposal.

RESPONSES TO QUESTIONS

No questions were submitted by the due date specified on the contract document.

CHANGES TO THE SPECIFICATIONS

1. Remove Bid Proposal in its entirety and replace with Bid Proposal provided in this addendum. The Bid Proposal is hereby deleted in its entirety and replaced with the revised Bid Proposal attached to this Addendum. The Bid Proposal signature page has been updated; however, all quantities have not changed. This update is related to the new statutes from the last legislative session. The updated version must be used by Bidder when submitting a Bid for this project. Failure to do so may result in the Bid being found non-responsive and rejected.
2. Remove Special Specification SS 03100 Temporary Water Bypass in its entirety and replaced with SS 03100 provided in this addendum.

CHANGES TO THE PLANS

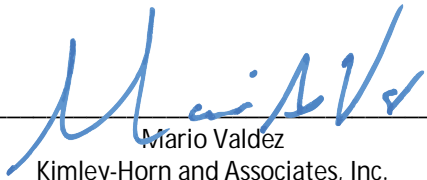
1. Remove Sheets G2, G4, G8, C1, and C11 in its entirety and replace with plan sheets provided in this addendum.

END OF ADDENDUM 3

This Addendum is twelve (12) pages in its entirety.

Attachments:

- Specification – BP-1 Bid Proposal (3 Pages)
- Specification – SS 03100 Temporary Water Bypass (2 Pages)
- Plans – Sheet G2 General Notes (Sheet 1 of 2) (1 Page)
- Plans – Sheet G4 Quantities (1 Page)
- Plans – Sheet G8 Suggested Construction Sequencing (1 Page)
- Plans – Sheet C1 Waterline Plan & Profile Start to Sta. 4+00 (1 Page)
- Plans – Sheet C11 Temporary 10-inch Water Bypass (1 Page)



Mario Valdez
Kimley-Horn and Associates, Inc.



BID PROPOSAL

PROPOSAL OF _____, a corporation
a partnership consisting of _____
an individual doing business as _____

THE SAN ANTONIO WATER SYSTEM:

Pursuant to Instructions and Invitation to Bidders, the undersigned proposes to furnish all labor and materials as specified and perform the work required for the project as specified, in accordance with the Plans and Specifications for the following prices in the bid proposal to wit:

PLEASE SEE ATTACHED LIST OF BID ITEMS.

BIDDER'S SIGNATURE & TITLE

FIRM'S NAME (TYPE OR PRINT)

FIRM'S ADDRESS

FIRM'S PHONE NO. /FAX NO.

FIRM'S EMAIL ADDRESS

The Contractor herein acknowledges receipt of the following: Addendum Nos. _____

OWNER RESERVES THE RIGHT TO ACCEPT THE OVERALL MOST RESPONSIBLE BID.

The bidder offers to construct the Project in accordance with the Contract Documents for the contract price, and to complete the Project within **250** calendar days after the start date, as set forth in the Authorization to Proceed. **The bidder understands and accepts the provisions of the contract Documents relating to liquidated damages of the project if not completed on time.**

Complete the additional requirements of the Bid Proposal which are included on the following pages.

Statement on President's Executive Orders

Has your firm previously performed work subject to the President's Executive Orders Numbers 11246 and 11375 or any preceding similar executive orders (Numbers 10925 and 11114)? Yes No

(1) Are you, Contractor, held or controlled by individuals who are citizens of China, Iran, North Korea, Russia or a country designated by the Governor of the State of Texas pursuant to Texas Government Code Chapter 2274? Yes No

(2) Are you, Contractor, held or controlled by a company or other entity, including a governmental entity, that is owned or controlled by citizens of or directly controlled by the government of China, Iran, North Korea, Russia or a country designated by the Governor of the State of Texas pursuant to Texas Government Code Chapter 2274? Yes No

(3) Are you, Contractor, headquartered in China, Iran, North Korea, Russia or a country designated by the Governor of the State of Texas pursuant to Texas Government Code Chapter 2274? Yes No

Item No.		Description	Unit	Quantity	Unit Price	Total Price
1	103.1	REMOVE CONCRETE CURB	LF	2,738	\$	\$
2	103.3	REMOVE CONCRETE SIDEWALKS AND DRIVEWAYS	SF	10,404	\$	\$
3	103.4	REMOVE MISCELLANEOUS CONCRETE	SF	459	\$	\$
4	201.2	CEMENT TREATED BASE (6" COMP. DEPTH)	SY	647	\$	\$
5	203.1	TACK COAT	GAL	1,144	\$	\$
6	205.2	HOT MIX ASPHALTIC PAVEMENT, TYPE B (10" COMP. DEPTH)	SY	1,572	\$	\$
7	205.3	HOT MIX ASPHALTIC PAVEMENT, TYPE C (2" COMP. DEPTH)	SY	7,541	\$	\$
8	208.1	SALVAGING, HAULING, AND STOCKPILING RECLAIMABLE ASPHALTIC PAVEMENT (2" DEPTH)	SY	5,248	\$	\$
9	413.2	FLOWABLE FILL (LOW STRENGTH)	CY	229	\$	\$
10	500.1	CONCRETE CURB	LF	2,738	\$	\$
11	502.1	CONCRETE SIDEWALKS	SY	931	\$	\$
12	503.1	PORTLAND CEMENT CONCRETE DRIVEWAY	SY	225	\$	\$
13	504.1	CONCRETE MEDIAN	SY	51	\$	\$
14	515.1	TOPSOIL (4" DEPTH)	CY	233	\$	\$
15	520.1	HYDROMULCHING	SY	2,072	\$	\$
16	530.1	BARRICADES, SIGNS, AND TRAFFIC HANDLING	LS	1	\$	\$
17	535.2	4" WIDE WHITE LINE	LF	1,155	\$	\$
18	535.27	12" WIDE BLACK LINE (CONTRAST)	LF	93	\$	\$
19	535.7	24" WIDE WHITE LINE	LF	93	\$	\$
20	537.8	PAVEMENT MARKER (TYPE II-A-A)	EA	22	\$	\$
21	SP540	TEMPORARY EROSION, SEDIMENTATION AND WATER POLLUTION PREVENTION	LS	1	\$	\$
22	550	TRENCH EXCAVATION SAFETY PROTECTION	LF	2,544	\$	\$
23	814	12" DI CLASS 350 (DIPS) WATERLINE (ALL DEPTHS)	LF	35	\$	\$
24	814	20" DI CLASS 250 (DIPS) WATERLINE (ALL DEPTHS)	LF	10	\$	\$

3

25	814	30" DI CLASS 200 (DIPS) WATERLINE (ALL DEPTHS)	LF	2,509	\$	\$
26	SP 815	10" TEMPORARY WATER MAIN	LF	385	\$	\$
27	824	8" RELAY SHORT SERVICE	EA	1	\$	\$
28	828	8" GATE VALVE CLASS 250	EA	1	\$	\$
29	828	12" GATE VALVE CLASS 250	EA	3	\$	\$
30	828	16" GATE VALVE CLASS 250	EA	1	\$	\$
31	828	20" GATE VALVE CLASS 250	EA	1	\$	\$
32	830	30" BUTTERFLY VALVE CLASS 250	EA	4	\$	\$
33	831	20" X 30" CUT-IN TEE	EA	1	\$	\$
34	834.1	FIRE HYDRANT	EA	6	\$	\$
35	836	DUCTILE IRON FITTINGS, ALL SIZES AND TYPES	TN	20.0	\$	\$
36	840	12" WATER TIE-IN	EA	1	\$	\$
37	840	30" WATER TIE-IN	EA	1	\$	\$
38	SP841	WATER HYDROSTATIC PRESSURE TEST	LS	1	\$	\$
39	844.7.1	2" BLOW-OFF, PERMANENT	EA	1	\$	\$
40	844.7.2	2" BLOW-OFF, TEMPORARY	EA	2	\$	\$
41	844.7.2	4" BLOW-OFF, TEMPORARY	EA	2	\$	\$
42	846	2" COMBINATION AIR RELEASE VALVE ASSEMBLY	EA	1	\$	\$
43	SS02550	ABANDON - WATER MAIN (12- INCH) AND APPURTENANCES	LF	848	\$	\$
Sub-total (Line Items 1-43)						

Item No.	Description	Unit	Quantity	Unit Price	Total Price
44	102.1	INTERMEDIATE MOBILIZATION/DEMOBILIZATION	EA	1	\$
45	100	MOBILIZATION (MAXIMUM 10% OF ITEMS 1 TO 43)	LS	1	\$
46	101	PREPARING RIGHT OF WAY (MAXIMUM 5% OF ITEMS 1 TO 43)	LS	1	\$

Mobilization and Prep of ROW shall be limited to the maximum percentage shown. **If the percentage exceeds the allowable maximum stated for mobilization and or preparation of ROW, SAWS reserves the right to cap the amount at the percentages shown and adjust the extensions of the bid items accordingly.**

TOTAL BID PRICE (TO INCLUDE LINE ITEMS 1 - 46)	\$
---	----

PART 1 – GENERAL

1.01 SUMMARY

- A. Section includes: The installation of a temporary waterline, including fittings, tie-ins, service connections, valves and all appurtenances to provide a temporary water main in accordance with these specifications.
- B. Materials: CONTRACTOR is to use HDPE or other approved SAWS and OWNER's representative material for the temporary water main. All types of pipe materials will be part of this bid item.

1.02 RELATED WORK SPECIFIED ELSEWHERE

- A. SAWS 815 – High Density Polyethylene (HDPE) Pipe Installation Direct Bury for Water

1.03 REFERENCE SPECIFICATIONS, CODES, AND STANDARDS

- A. The publications listed below form a part of this Specification to the extent referenced. Where conflicts between these Specifications and the referenced specification, code or standard occur, the more restrictive specification shall govern. The latest edition available on the date of issue of Contract Documents shall be used.

1.04 SUBMITTALS

- A. Submittals shall be in accordance with San Antonio Water System's General Conditions.
- B. Submittals shall be made in accordance with these Specifications. Provide sufficient detail to allow the OWNER to judge whether the proposed equipment, materials, and procedures will meet the Contract requirements. All drawings shall be legible with dimensions accurately shown and clearly marked in English. Poor quality drawings and photographs will not be accepted. Review and acceptance of the CONTRACTOR's submittals by the OWNER shall not be construed in any way as relieving the CONTRACTOR of its responsibilities under the Contract.

PART 2 - EXECUTION

2.01 GENERAL REQUIREMENTS

- A. The CONTRACTOR is responsible for maintaining access to impacted property owners and securing the temporary water main during construction and be responsible for any damage and /or injuries resulting from the installation of the temporary water main.
- B. The temporary water main is intended to be above ground installation unless otherwise stated on plans. The CONTRACTOR is to fully restrain the entire length of the temporary water main if placed above ground. If the temporary water main is underground the pipe will be a restrained system and must adhere to Standard details DD-839-04 through DD-839-08 or as shown on plan drawings. Restraints for the temporary water main are inclusive to this bid item.

- C. The CONTRACTOR shall protect temporary water main from impacts/damages by vehicular traffic by installing concrete barriers or as approved by SAWS and Engineer. If such damages are to occur, the CONTRACTOR shall repair damage at no cost to SAWS. CONTRACTOR shall also protect temporary waterline from environment to prevent bursting of waterline.
- D. The CONTRACTOR shall bury temporary waterlines as stated on plans and at each driveway and as required to maintain traffic flow along road as well as access to adjacent residential properties and businesses.
- E. The CONTRACTOR shall notify residents 48 hours prior to installation of the temporary main.
- F. Temporary main must be chlorinated, sampled, and tested prior to activation.

PART 3 – MEASUREMENT AND PAYMENT

3.01 MEASUREMENT


- A. The temporary waterline shall be measured by the linear foot (LF) along the temporary water main.

3.02 PAYMENT:

- A. The temporary waterline, including fittings, tie-ins, chlorination, service connections, restraints, backfill, concrete thrust blocks, pipe restraints, valves and all appurtenances to provide a temporary water main will be paid at the unit bid price per linear foot, inclusive of all the above stated items installed. Pavement restoration shall also include but not limited to driveways, sidewalks, and pavement. Such payment shall also include any trench excavation, if required, accomplished either manually or mechanically.

END OF SECTION

Sheet Index

- G1 COVER SHEET
- G2 GENERAL NOTES (SHEET 1 OF 2)
- G3 GENERAL NOTES (SHEET 2 OF 2)
- G4 QUANTITIES
- G5 PROJECT CONTROL MAP (SHEET 1 OF 2)
- G6 PROJECT CONTROL MAP (SHEET 2 OF 2)
- G7 PROJECT LAYOUT
- G8 SUGGESTED CONSTRUCTION SEQUENCING
- G9 CONTRACTOR ACCESS & STAGING
- G10 ABANDONMENT & REMOVAL PLAN
- C1 WATERLINE PLAN & PROFILE START TO STA. 4+00
- C2 WATERLINE PLAN & PROFILE STA. 4+00 TO 8+00
- C3 WATERLINE PLAN & PROFILE STA. 8+00 TO 12+00
- C4 WATERLINE PLAN & PROFILE STA. 12+00 TO 16+00
- C5 WATERLINE PLAN & PROFILE STA. 16+00 TO 20+00
- C6 WATERLINE PLAN & PROFILE 20+00 TO 24+00
- C7 WATERLINE PLAN & PROFILE 24+00 TO END
- C8 GENERAL DETAILS
- C9 EROSION CONTROL NOTES
- C10 EROSION CONTROL DETAILS
- C11 TEMPORARY 10-INCH WATER BYPASS 
- TCP 1 TRAFFIC CONTROL NOTES
- TCP 2 TRAFFIC CONTROL PHASE 1 - STAGE 1
- TCP 3 TRAFFIC CONTROL PHASE 1 - STAGE 1
- TCP 4 TRAFFIC CONTROL PHASE 1 - STAGE 1
- TCP 5 TRAFFIC CONTROL PHASE 1 - STAGE 1
- TCP 6 TRAFFIC CONTROL PHASE 1 - STAGE 2
- TCP 7 TRAFFIC CONTROL PHASE 1 - STAGE 2
- TCP 8 TRAFFIC CONTROL PHASE 1 - STAGE 2
- TCP 9 TRAFFIC CONTROL PHASE 1 - STAGE 2
- TCP 10 TRAFFIC CONTROL PHASE 1 - STAGE 2
- TCP 11 TRAFFIC CONTROL PHASE 2
- TCP 12 TRAFFIC CONTROL PHASE 2
- TCP 13 TRAFFIC CONTROL PHASE 2
- TCP 14 BARRICADE AND CONSTRUCTION GENERAL NOTES AND REQUIREMENTS
- TCP 15 BARRICADE AND CONSTRUCTION PROJECT LIMIT
- TCP 16 BARRICADE AND CONSTRUCTION WORK ZONE SPEED LIMIT
- TCP 17 BARRICADE CONSTRUCTION TEMPORARY SIGN NOTES
- TCP 18 BARRICADE AND CONSTRUCTION TYPICAL SIGN SUPPORT
- TCP 19 BARRICADE AND CONSTRUCTION PORTABLE CHANGEABLE MESSAGE SIGN (PCMS)
- TCP 20 BARRICADE AND CONSTRUCTION ARROW PANEL, REFLECTORS, WARNING LIGHTS & ATTENUATOR
- TCP 21 BARRICADE AND CONSTRUCTION CHANNELIZING DEVICES
- TCP 22 BARRICADE AND CONSTRUCTION CHANNELIZING DEVICES
- TCP 23 BARRICADE AND CONSTRUCTION CHANNELIZING DEVICES
- TCP 24 BARRICADE AND CONSTRUCTION CHANNELIZING DEVICES
- TCP 25 BARRICADE AND CONSTRUCTION PAVEMENT MARKING PATTERNS
- TP 1 TREE PROTECTION NOTES AND PRESERVATION SUMMARY TABLE
- TP 2 TREE INVENTORY
- TP 3 TREE PRESERVATION OVERALL LAYOUT
- TP 4 TREE PROTECTION START TO STA. 8+00
- TP 5 TREE PROTECTION STA. 8+00 TO 16+00
- TP 6 TREE PROTECTION STA. 16+00 TO 24+00
- TP 7 TREE PROTECTION STA. 24+00 TO END
- TP 8 TREE PRESERVATION DETAILS

SAWS General Construction Notes

1. ALL MATERIALS AND CONSTRUCTION PROCEDURES WITHIN THE SCOPE OF THIS CONTRACT SHALL BE APPROVED BY THE SAN ANTONIO WATER SYSTEM (SAWS) AND COMPLY WITH THE PLANS, SPECIFICATIONS, GENERAL CONDITIONS AND WITH THE FOLLOWING AS APPLICABLE:
 - A. CURRENT TEXAS COMMISSION ON ENVIRONMENTAL QUALITY (TCEQ) "DESIGN CRITERIA FOR DOMESTIC WASTEWATER SYSTEM"; TEXAS ADMINISTRATIVE CODE (TAC) TITLE 30 PART 1 CHAPTER 217 AND "PUBLIC DRINKING WATER", TAC TITLE 30 PART 1 CHAPTER 290.
 - B. CURRENT TxDOT "STANDARD SPECIFICATIONS FOR CONSTRUCTION OF HIGHWAYS, STREETS AND DRAINAGE."
 - C. LATEST 2021 REVISION OF "SAN ANTONIO WATER SYSTEM STANDARD SPECIFICATIONS FOR WATER AND SANITARY SEWER CONSTRUCTION."
 - D. CURRENT CITY OF SAN ANTONIO "STANDARD SPECIFICATION FOR CONSTRUCTION."
 - E. CURRENT CITY OF SAN ANTONIO "UTILITY EXCAVATION CRITERIA MANUAL" (UECM).
2. THE CONTRACTOR SHALL OBTAIN SAWS STANDARD DETAILS FROM SAWS WEBSITE, [HTTPS://APPS.SAWS.ORG/BUSINESS_CENTER/SPECS/CONSTSPECS/](https://apps.saws.org/business_center/specs/constspecs/). UNLESS OTHERWISE NOTED WITHIN DESIGN PLANS.
3. THE CONTRACTOR IS TO NOTIFY AND MAKE ARRANGEMENTS WITH THE SAWS CONSTRUCTION INSPECTION DIVISION AT 210-233-3500 (DURING REGULAR SAWS WORKING HOURS), AND PROVIDE NOTIFICATION PROCEDURES THE CONTRACTOR WILL USE TO NOTIFY AFFECTED HOME RESIDENTS AND/OR PROPERTY OWNERS 48 HOURS PRIOR TO EXCAVATION. OUTSIDE OF REGULAR SAWS WORKING HOURS THE SAWS EOC SHOULD BE CONTACTED AT 210-704-7297.
4. CONTRACTOR WILL COORDINATE USE OF SAWS PREMISES AT NO ADDITIONAL COST TO SAWS. SUCH EFFORTS INCLUDE, BUT ARE NOT LIMITED TO, OBTAINING SECURITY IDENTIFICATION BADGES REQUIRED FOR ACCESS TO SAWS FACILITIES.
5. LOCATIONS AND DEPTHS OF EXISTING UTILITIES AND SERVICE LATERALS SHOWN ON THE PLANS ARE UNDERSTOOD TO BE APPROXIMATE. ACTUAL LOCATIONS AND DEPTHS MUST BE FIELD VERIFIED BY THE CONTRACTOR AT LEAST 1 WEEK PRIOR TO CONSTRUCTION. IT SHALL BE THE CONTRACTOR'S RESPONSIBILITY TO LOCATE UTILITY SERVICE LINES AS REQUIRED FOR CONSTRUCTION AND TO PROTECT THEM DURING CONSTRUCTION AT NO COST TO SAWS. CONTRACTOR SHALL REFER TO SPECIAL CONDITION 1.8.
6. THE CONTRACTOR SHALL VERIFY THE EXACT LOCATION OF UNDERGROUND UTILITIES AND DRAINAGE STRUCTURES AT LEAST 1-2 WEEKS PRIOR TO CONSTRUCTION WHETHER SHOWN ON PLANS OR NOT. PLEASE ALLOW UP TO 7 BUSINESS DAYS FOR LOCATES REQUESTING PIPE LOCATION MARKERS ON SAWS FACILITIES. THE FOLLOWING CONTACT INFORMATION ARE SUPPLIED FOR VERIFICATION PURPOSES:

SAN ANTONIO WATER SYSTEM:
SAWS UTILITY LOCATES: [HTTP://WWW.SAWS.ORG/SERVICE/LOCATES-SERVICE/](http://www.saws.org/service/locates-service/)

COSA DRAINAGE 210-207-8048
COSA TRAFFIC SIGNAL OPERATIONS 210-207-7720
TEXAS STATE WIDE ONE CALL LOCATOR 1-800-545-6005 OR 811
7. THE CONTRACTOR SHALL BE RESPONSIBLE FOR RESTORING EXISTING FENCES, CURBS, STREETS, DRIVEWAYS, SIDEWALKS, LANDSCAPING AND STRUCTURES TO ITS ORIGINAL OR BETTER CONDITION AS A RESULT OF DAMAGES DONE BY THE PROJECT'S CONSTRUCTION.
8. CONTRACTOR SHALL NOT MAKE USE OF DUMPSTERS OR WASTE BINS THAT ARE INTENDED TO SERVE RESIDENTS AND/OR BUSINESSES.
9. ALL WORK IN TEXAS HIGHWAY DEPARTMENT, CITY OF SAN ANTONIO, AND BEXAR COUNTY RIGHT-OF-WAY SHALL BE DONE IN ACCORDANCE WITH RESPECTIVE CONSTRUCTION SPECIFICATIONS AND PERMIT.
10. THE CONTRACTOR SHALL COMPLY WITH CITY OF SAN ANTONIO OR OTHER GOVERNING MUNICIPALITY'S TREE ORDINANCE WHEN EXCAVATING NEAR TREES.
11. THE CONTRACTOR SHALL NOT PLACE ANY WASTE MATERIALS IN THE 100-YEAR FLOOD PLAIN WITHOUT FIRST OBTAINING AN APPROVED FLOOD PLAIN PERMIT.
12. ANY WORK COMPLETED WITHOUT PRIOR WRITTEN AUTHORIZATION WHICH IS NOT INCLUDED IN THESE PLANS AND SPECIFICATIONS WILL NOT BE COMPENSATED BY THE SAN ANTONIO WATER SYSTEM.
13. HOLIDAY WORK: CONTRACTORS WILL NOT BE ALLOWED TO PERFORM SAWS WORK ON SAWS RECOGNIZED HOLIDAYS. REQUEST SHOULD BE SENT TO CONSTWORKREQ@SAWS.ORG.
- WEEKEND WORK: CONTRACTORS ARE REQUIRED TO NOTIFY THE SAWS INSPECTION CONSTRUCTION DEPARTMENT 48 HOURS IN ADVANCE TO REQUEST WEEKEND WORK. REQUEST SHOULD BE SENT TO CONSTWORKREQ@SAWS.ORG.
- ANY AND ALL SAWS UTILITY WORK INSTALLED WITHOUT HOLIDAY/WEEKEND APPROVAL WILL BE SUBJECT TO BE UNCOVERED FOR PROPER INSPECTION.
14. PRE CON SITE VIDEO: BEFORE THE START OF ANY CONSTRUCTION, THE SITE MUST BE VIDEO RECORDED BY THE CONTRACTOR WITH ONE COPY SUBMITTED TO SAWS INSPECTIONS. A PRE-SITE VIDEO WILL PROVIDE ACCURATE DOCUMENTATION OF THE EXISTING CONDITIONS (NSPI).
15. POWER POLE BRACING: CONTRACTORS SHOULD BE ADVISED THAT THERE ARE EXISTING OVERHEAD UTILITY POLES ALONG THE PROJECT CORRIDOR. CONTRACTORS SHOULD FURTHER BE ADVISED THAT IF THE DISTANCE FROM THE OUTSIDE FACE OF A UTILITY TRENCH TO THE FACE OF A UTILITY POLE IS LESS THAN 5 FEET, SAWS UTILITY POLE IS SUBJECT TO BRACING, BASED ON A DETERMINATION MADE BY UTILITY POLE OWNER. COSTS INCURRED BY CONTRACTOR FOR BRACING OF THESE UTILITY POLES IS SUBSIDIARY TO THE WATER MAIN INSTALLATION. IT IS ADVISABLE FOR THE CONTRACTOR TO REVIEW THE CONSTRUCTION DOCUMENTS, AND VISIT THE CONSTRUCTION SITE TO DETERMINE POTENTIAL IMPACTS.
16. CONSTRUCTION SEQUENCING: IT IS THE CONTRACTOR SOLE RESPONSIBILITY TO SCHEDULE SEQUENCING FOR REMOVAL AND INSTALLATION OF EXISTING AND PROPOSED SAWS UTILITIES IN CONJUNCTION WITH GENERAL PROJECT CONSTRUCTION. SEQUENCE OF CONSTRUCTION ACTIVITIES SHALL BE CONSIDERED IN ORDER TO MINIMIZE THE EXTENT AND DURATION OF DISTURBANCES.
17. AS PART OF SAFETY EFFORTS REQUIRED BY THE GENERAL CONDITIONS OF THIS CONTRACT THE CONTRACTOR SHALL COMPLY WITH APPLICABLE REGULATIONS INCLUDING, BUT NOT LIMITED TO, THOSE OVERSEEN BY THE U.S. OCCUPATIONAL SAFETY AND HEALTH ADMINISTRATION (OSHA). OSHA INFORMATION AND RELATED MATERIALS MAY BE OBTAINED AT [HTTPS://WWW.OSHA.GOV/](https://www.osha.gov/) OR AT THE OSHA SAN ANTONIO OFFICE LOCATED AT FOUNTAINHEAD TOWER, SUITE 605 8200 W. INTERSTATE 10 SAN ANTONIO, TX 78230 WHICH IS ALSO REACHABLE BY PHONE AT (210) 472-5040.
18. TRENCH EXCAVATION SAFETY PROTECTION: CONTRACTOR AND/OR CONTRACTOR'S INDEPENDENTLY RETAINED EMPLOYEE OR STRUCTURAL DESIGN/GEOTECHNICAL/SAFETY/EQUIPMENT CONSULTANT, IF ANY, SHALL REVIEW THESE PLANS AND AVAILABLE GEOTECHNICAL INFORMATION AND THE ANTICIPATED INSTALLATION SITE(S) WITHIN THE PROJECT WORK AREAS IN ORDER TO IMPLEMENT CONTRACTOR'S TRENCH EXCAVATION SAFETY PROTECTION SYSTEMS, PROGRAMS AND/OR PROCEDURES. THE CONTRACTOR'S IMPLEMENTATION OF THE SYSTEMS, PROGRAMS AND/OR PROCEDURES SHALL PROVIDE FOR ADEQUATE TRENCH EXCAVATION SAFETY PROTECTION THAT COMPLIES WITH AS A MINIMUM, OSHA STANDARDS FOR TRENCH EXCAVATIONS. SPECIFICALLY, CONTRACTOR AND/OR CONTRACTOR'S INDEPENDENTLY RETAINED EMPLOYEE OR SAFETY CONSULTANT SHALL IMPLEMENT A TRENCH SAFETY PROGRAM IN ACCORDANCE WITH OSHA STANDARDS GOVERNING THE PRESENCE AND ACTIVITIES OF INDIVIDUALS WORKING IN AND AROUND TRENCH EXCAVATION.
19. THE CONTRACTOR SHALL MEET WITH THE SAWS INSPECTOR, COUNTY INSPECTOR, CITY INSPECTOR AND ENGINEER'S INSPECTOR TWO WEEKS PRIOR TO COMMENCING CONSTRUCTION.

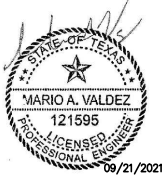

SAWS General Water Notes

1. PRIOR TO TIE-INS, ANY SHUTDOWNS OF EXISTING MAINS OF ANY SIZE MUST BE COORDINATED WITH THE SAWS INSPECTION AND/OR SAWS PRODUCTION GROUPS AT LEAST TWO WEEKS OR MORE IN ADVANCE OF THE SHUTDOWN. THE CONTRACTOR MUST ALSO PROVIDE A SEQUENCE OF WORK AS RELATED TO THE TIE-INS; THIS IS AT NO ADDITIONAL COST TO SAWS OR THE PROJECT AND IT IS THE RESPONSIBILITY OF THE CONTRACTOR TO SEQUENCE THE WORK ACCORDINGLY. SAWS PRODUCTION CONTROL CENTER 210-233-2016
2. VALVE REMOVAL: WHERE THE CONTRACTOR IS TO ABANDON A WATER MAIN, THE CONTROL VALVE LOCATED ON THE ABANDONING BRANCH WILL BE REMOVED AND REPLACED WITH A CAP/PLUG (NSPI).

General Notes

1. CONTRACTOR IS REQUIRED TO VERIFY PROJECT ELEVATIONS. "MATCH EXISTING" SHALL BE UNDERSTOOD TO SIGNIFY VERTICAL AND HORIZONTAL ALIGNMENT.
2. EXISTING TREES, IMPROVEMENTS AND UTILITIES THAT ARE LOCATED IN AREAS DESIGNATED FOR TEMPORARY CONSTRUCTION USE, SHALL BE PROTECTED FROM ANY POTENTIAL DANGER UNLESS SPECIFIC WRITTEN DIRECTION IS PROVIDED BY SAWS. DAMAGE TO THESE ITEMS IN TEMPORARY CONSTRUCTION AREAS SHALL BE CORRECTED TO THE SATISFACTION OF SAWS, AT CONTRACTOR EXPENSE. THE CONTRACTOR IS RESPONSIBLE FOR DAMAGE, IF ANY DAMAGE IS DONE TO EXISTING STRUCTURES WITHIN THE ROW SUCH AS MAILBOXES, POLES, OR DRIVEWAYS, THE CONTRACTOR SHALL REPLACE THEM AT THEIR OWN EXPENSE.
3. THESE PLANS, PREPARED BY KIMLEY-HORN AND ASSOCIATES, INC. DO NOT EXTEND TO OR INCLUDE DESIGNS OR SYSTEMS PERTAINING TO THE SAFETY OF THE CONSTRUCTION CONTRACTOR OR ITS EMPLOYEES, AGENTS OR REPRESENTATIVES IN THE PERFORMANCE OF THE WORK. THE SEAL OF KIMLEY-HORN AND ASSOCIATES, INC.'S LICENSED PROFESSIONAL ENGINEER(S) HEREON DOES NOT EXTEND TO ANY SUCH SAFETY SYSTEMS THAT MAY NOW OR HEREAFTER BE INCORPORATED INTO THE WORK. THE CONSTRUCTION CONTRACTOR SHALL PREPARE OR OBTAIN THE APPROPRIATE SAFETY SYSTEMS.
4. CONTRACTOR SHALL COORDINATE INTERRUPTIONS OF ALL UTILITIES AND SERVICES WITH APPLICABLE UTILITY COMPANY OR COMPANIES. ALL WORK TO BE IN ACCORDANCE WITH THE REQUIREMENTS OF THE APPLICABLE UTILITY COMPANY OR AGENCY INVOLVED.
5. EXISTING PAVING, BUILDINGS, AND OTHER ITEMS SHOWN ON PLANS NOT SPECIFICALLY RELATED TO THE WORK OF THE CONTRACT ARE FOR INFORMATIONAL PURPOSES ONLY.
6. ANY CHANGES OR REVISIONS TO THESE PLANS MUST FIRST BE SUBMITTED TO SAWS FOR REVIEW AND WRITTEN APPROVAL.
7. CONTRACTOR SHALL COORDINATE WITH THE SAWS INSPECTOR TO ADDRESS ALL LIMITS FOR CURB, SIDEWALK, AND TREE PROTECTION BEYOND WHAT IS CONSIDERED INCIDENTAL TO NORMAL UTILITY CONSTRUCTION. ALL COMMUNICATION FROM THE CITY AND COUNTY WILL BE COORDINATED THROUGH THE SAWS INSPECTOR. CONTRACTOR SHALL SUBMIT TO SAWS ANY REQUEST FOR INFORMATION (RFI), REQUEST FOR PAYMENT (RFP), AND/OR CHANGE ORDERS (CO) TO DETERMINE IF ADDITIONAL COMPENSATION IS WARRANTED IF LIMITS EXCEED INCIDENTALS.
8. IN ALL AREAS WHERE AN EXISTING PAVED SURFACE (SUCH AS A ROADWAY, DRIVEWAY, OR SIDEWALK) ARE TO BE IMPACTED BY CONSTRUCTION, THE CONTRACTOR SHALL SAW-CUT THE PAVED SURFACE PRIOR TO EXCAVATING, ASSURING CLEAN & STRAIGHT CUT TO FULL DEPTH OF THE PAVED SURFACE.
9. IN ALL AREAS WHERE SIDEWALK, CURB, OR DRIVEWAY IS TO BE REPLACED, THE CONTRACTOR SHALL REMOVE AT NEAREST POINT.
10. COORDINATES ARE BASED ON THE STATE PLANE COORDINATE SYSTEM ESTABLISHED FOR THE TEXAS SOUTH CENTRAL ZONE 4204, NORTH AMERICAN DATUM (NAD) OF 1983, SURFACE.
11. CONTRACTOR TO REFER TO SPECIAL CONDITIONS FOR ADDITIONAL INFORMATION.
12. CONTRACTOR SHALL REFERENCE TREE PROTECTION PLANS FOR TREE PRESERVATION. TREE TRIMMING IS ANTICIPATED. CONTRACTOR SHALL COORDINATE WITH CITY ARBORIST.

(NSPI) - NO SEPARATE PAY ITEM

	<h2 style="margin: 0;">Kimley»Horn</h2> <p style="margin: 0;">Texas Registered Firm, No. 928</p> <p style="margin: 0;">601 NW Loop 410 Suite 350 Tel No. 210-541-9166 San Antonio, TX 78216 Fax No. 210-541-8699</p>									
<table border="1" style="width: 100%; border-collapse: collapse;"> <thead> <tr> <th style="width: 10%;">No.</th> <th style="width: 60%;">Revision</th> <th style="width: 10%;">By</th> <th style="width: 20%;">Date</th> </tr> </thead> <tbody> <tr> <td style="text-align: center;">A</td> <td>ADDENDUM NO. 3</td> <td style="text-align: center;">MAV</td> <td style="text-align: center;">9/21/2021</td> </tr> </tbody> </table>	No.	Revision	By	Date	A	ADDENDUM NO. 3	MAV	9/21/2021	<div style="display: flex; justify-content: space-between; align-items: center;">  <div style="text-align: center;"> <p style="margin: 0;">SAN ANTONIO WATER SYSTEM</p> </div> </div> <h3 style="margin: 10px 0 0 0;">CANYON GOLF RD WATER MAIN EXTENSION PROJECT</h3> <p style="margin: 0 0 0 40px;">SHEET</p> <h2 style="margin: 0 0 0 40px;">GENERAL NOTES (SHEET 1 OF 2)</h2>	
No.	Revision	By	Date							
A	ADDENDUM NO. 3	MAV	9/21/2021							
<table border="1" style="width: 100%; border-collapse: collapse;"> <tr> <td style="width: 30%;">DATE: AUGUST 2021</td> <td style="width: 40%;">SAWS PROJECT NO. 20-7004</td> <td rowspan="4" style="width: 30%; text-align: center; vertical-align: middle; font-size: 2em;">G2</td> </tr> <tr> <td>DESIGN: MAV</td> <td>KHA PROJECT NO. 068665058</td> </tr> <tr> <td>DRAWN: MMV</td> <td></td> </tr> <tr> <td>CHECKED: JAF</td> <td></td> </tr> </table>	DATE: AUGUST 2021	SAWS PROJECT NO. 20-7004	G2	DESIGN: MAV	KHA PROJECT NO. 068665058	DRAWN: MMV		CHECKED: JAF		
DATE: AUGUST 2021	SAWS PROJECT NO. 20-7004	G2								
DESIGN: MAV	KHA PROJECT NO. 068665058									
DRAWN: MMV										
CHECKED: JAF										

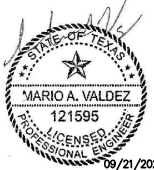


Overall Quantities

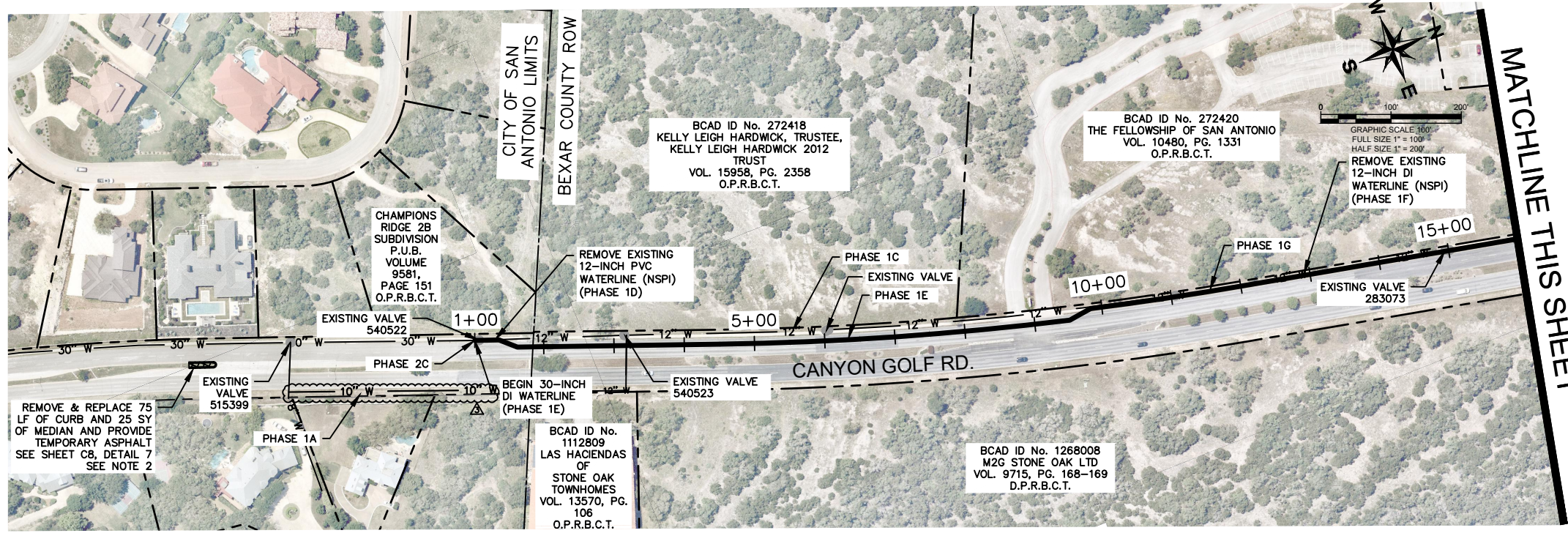
ITEM NO.	DESCRIPTION	UNIT	QUANTITY
1	103.1 REMOVE CONCRETE CURB	LF	2,738
2	103.3 REMOVE CONCRETE SIDEWALKS AND DRIVEWAYS	SF	10,404
3	103.4 REMOVE MISCELLANEOUS CONCRETE	SF	459
4	201.2 CEMENT TREATED BASE (6" COMP. DEPTH)	SY	647
5	203.1 TACK COAT *	GAL	1,144
6	205.2 HOT MIX ASPHALTIC PAVEMENT, TYPE B (10" COMP. DEPTH) *	SY	1,572
7	205.3 HOT MIX ASPHALTIC PAVEMENT, TYPE C (2" COMP. DEPTH) *	SY	7,541
8	208.1 SALVAGING, HAULING, AND STOCKPILING RECLAIMABLE ASPHALTIC PAVEMENT (2" DEPTH) *	SY	5,248
9	413.2 FLOWABLE FILL (LOW STRENGTH)	CY	229
10	500.1 CONCRETE CURB	LF	2,738
11	502.1 CONCRETE SIDEWALKS*	SY	931
12	503.1 PORTLAND CEMENT CONCRETE DRIVEWAY *	SY	225
13	504.1 CONCRETE MEDIAN	SY	51
14	515.1 TOPSOIL (4" DEPTH)	CY	233
15	520.1 HYDROMULCHING	SY	2,072
16	530.1 BARRICADES, SIGNS, AND TRAFFIC HANDLING	LS	1
17	535.2 4" WIDE WHITE LINE	LF	1,155
18	535.27 12" WIDE BLACK LINE (CONTRAST)	LF	93
19	535.7 24" WIDE WHITE LINE	LF	93
20	537.8 PAVEMENT MARKER (TYPE II-A-A)	EA	22
21	SP540 TEMPORARY EROSION, SEDIMENTATION AND WATER POLLUTION PREVENTION CONTROL	LS	1
22	550 TRENCH EXCAVATION SAFETY PROTECTION	LF	2,544
23	814 12" DI CLASS 350 (DIPS) WATERLINE (ALL DEPTHS)	LF	35
24	814 20" DI CLASS 250 (DIPS) WATERLINE (ALL DEPTHS)	LF	10
25	814 30" DI CLASS 200 (DIPS) WATERLINE (ALL DEPTHS)	LF	2,509
26	SP815 10" TEMPORARY WATER MAIN 	LF	385
27	824 8" RELAY SHORT SERVICE	EA	1
28	828 8" GATE VALVE CLASS 250 **	EA	1
29	828 12" GATE VALVE CLASS 250 **	EA	3
30	828 16" GATE VALVE CLASS 250 **	EA	1
31	828 20" GATE VALVE CLASS 250 **	EA	1
32	830 30" BUTTERFLY VALVE CLASS 250	EA	4
33	831 20" X 30" CUT-IN TEE	EA	1
34	834.1 FIRE HYDRANT	EA	6
35	836 DUCTILE IRON FITTINGS, ALL SIZES AND TYPES	TN	20.0
36	840 12" WATER TIE-IN	EA	1
37	840 30" WATER TIE-IN	EA	1
38	SP841 WATER HYDROSTATIC PRESSURE TEST	LS	1
39	844.7.1 2" BLOW-OFF, PERMANENT	EA	1
40	844.7.2 2" BLOW-OFF, TEMPORARY	EA	2
41	844.7.2 4" BLOW-OFF, TEMPORARY	EA	2
42	846 2" COMBINATION AIR RELEASE VALVE ASSEMBLY	EA	1
43	SS02550 ABANDON - WATER MAIN (12-INCH) AND APPURTENANCES	LF	848
44	100 MOBILIZATION (MAXIMUM 10% OF ITEMS 1 TO 43)	LS	1
45	101 PREPARING RIGHT OF WAY (MAXIMUM 5% OF ITEMS 1 TO 43)	LS	1
46	102.1 INTERMEDIATE MOBILIZATION/DEMOLITION	EA	1

* CONTRACTOR SHALL NOTE, ADDITIONAL PAVEMENT, DRIVEWAY AND SIDEWALK RESTORATION QUANTITIES HAVE BEEN INCLUDED IN THE OVERALL QUANTITIES ABOVE BUT ARE NOT REFLECTED IN INDIVIDUAL SHEET QUANTITIES. CONTRACTOR SHALL RESTORE ALL SURFACE FEATURES WITHIN ROW TO EXISTING OR BETTER CONDITIONS, AS REQUIRED BY BEXAR COUNTY ROW PERMIT. REFER TO SPECIAL CONDITION 1.10.

** CONTRACTOR SHALL NOTE, ADDITIONAL GATE VALVE QUANTITIES HAVE BEEN INCLUDED IN THE OVERALL QUANTITIES ABOVE TO ACCOUNT FOR VALVE CLOSURES DURING TIE-INS BUT ARE NOT SHOWN IN INDIVIDUAL SHEET QUANTITIES. REFER TO SPECIAL CONDITION 1.9.

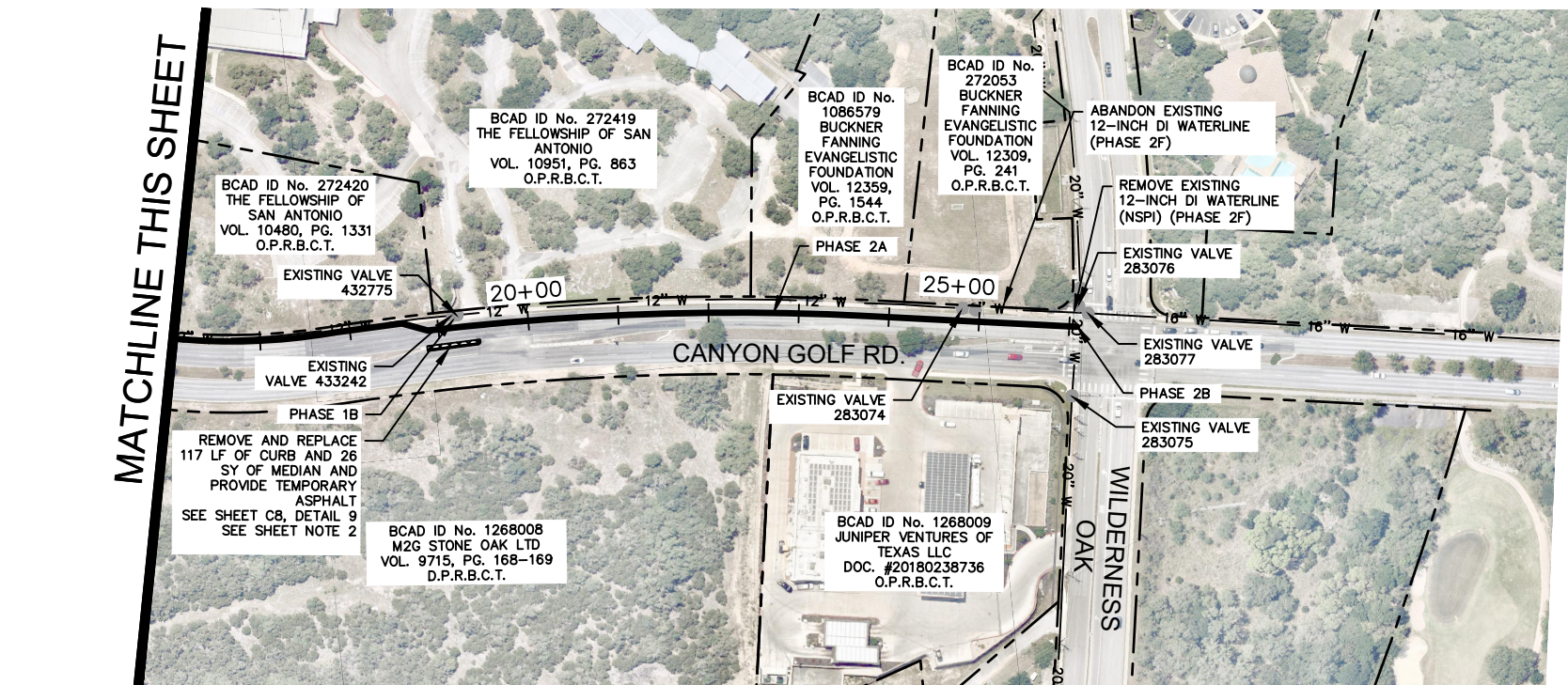
PLOTTED BY: VARA, MIKAELA 9/21/2021 9:24 AM
 DWG NAME: K:\SNA UTILITIES\06865058\CAD\PLANS\06865058.DWG
 DATE PLOTTED: 9/21/2021 9:24 AM

		<h2>Kimley»Horn</h2> <p>Texas Registered Firm, No. 928</p> <p>601 NW Loop 410 Suite 350 San Antonio, TX 78216 Tel No. 210-541-9166 Fax No. 210-541-8699</p>		
		No.	Revision	By
 ADDENDUM NO. 3		MAV	9/21/2021	
 SAN ANTONIO WATER SYSTEM		<h3>CANYON GOLF RD WATER MAIN EXTENSION PROJECT</h3> <p>SHEET</p> <h2>QUANTITIES</h2>		
		DATE: AUGUST 2021	SAWS PROJECT NO.	SHEET NO. G4
		DESIGN: MAV	20-7004	
		DRAWN: MMV	KHA PROJECT NO.	
CHECKED: JAF	068665058			



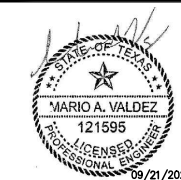
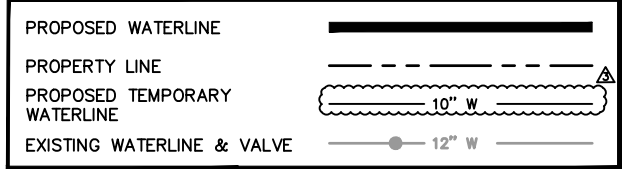
SUGGESTED CONSTRUCTION SEQUENCING NOTES

1. CONSTRUCTION SEQUENCING PLAN IS SUGGESTED. CONTRACTOR SHALL BE RESPONSIBLE FOR DEVELOPING CONSTRUCTION SEQUENCING IN ACCORDANCE WITH THE CONTRACT DOCUMENTS AND CONTRACTOR'S TRAFFIC CONTROL PLAN, WHICH MUST BE APPROVED BY THE CITY OF SAN ANTONIO AND BEXAR COUNTY. ACCESS AND WATER SERVICE MUST BE PROVIDED TO PROPERTY OWNERS AT ALL TIMES.
 2. CONTRACTOR SHALL NOTE, MEDIAN SHALL BE REMOVED TO FACILITATE TRAFFIC CONTROL IN THE LOCATIONS SPECIFIED ON SHEETS TOP3 AND TOP12. CONTRACTOR SHALL PROVIDE TEMPORARY ASPHALT WHERE MEDIAN IS REMOVED FOR TRAFFIC CONTROL AND RESTORE MEDIANS TO EXISTING OR BETTER CONDITIONS PER SHEET C8, DETAILS 7 AND 9.
- PHASE 1 – STAGE 1:**
- 1A. INSTALL, CHLORINATE/TEST AND PUT INTO SERVICE TEMPORARY (10-INCH) HDPE WATERLINE, SEE SHEET C11.
 - 1B. CLOSE VALVE 433242 AND INSTALL FIRE HYDRANT ON EXISTING WATERLINE AT APPROXIMATELY STA. 19+00. LOCATE FIRE HYDRANT AS TO NOT INTERFERE WITH PROPOSED IMPROVEMENTS.
 - 1C. SHUTDOWN EXISTING 12-INCH PVC AND DI WATERLINE. CONTRACTOR SHALL COORDINATE WITH SAWS (NSPI).
 - 1D. REMOVE EXISTING 12-INCH PVC WATERLINE FROM STA. 1+00.00 TO STA. 1+34.67.
 - 1E. INSTALL AND TEST PROPOSED 30-INCH DI WATERLINE FROM STA. 1+00.00 TO STA. 8+50.00.
- PHASE 1 – STAGE 2:**
- 1F. REMOVE EXISTING 12-INCH DI WATERLINE FROM STA. 9+84.03 TO STA. 18+58.41.
 - 1G. INSTALL AND TEST PROPOSED 30-INCH DI WATERLINE FROM STA. 8+50.00 TO STA. 18+58.41.
- PHASE 2:**
- 2A. INSTALL AND TEST PROPOSED 30-INCH DI WATERLINE FROM STA. 18+58.41 TO STA. 26+08.3.
 - 2B. AFTER RELEASE FOR SERVICE, TIE-IN PROPOSED 30-INCH DI WATERLINE TO EXISTING 30-INCH WATERLINE.
 - 2C. AFTER RELEASE FOR SERVICE, TIE-IN PROPOSED 30-INCH DI WATERLINE TO EXISTING 8-INCH SERVICE LINE AT STA. 19+19.74.
 - 2D. PUT IN SERVICE PROPOSED 30-INCH WATERLINE FROM STA. 1+00 TO STA. 19+19.74 TO MAINTAIN WATER SERVICE TO PROPERTY OWNERS PRIOR TO WILDERNESS OAK TIE-IN.
 - 2E. REMOVE TEMPORARY (10-INCH) WATERLINE.
 - 2F. AFTER RELEASE FOR SERVICE, REMOVE EXISTING 12-INCH DI PIPE FROM STA. 25+97.58 TO CROSS AND TIE-IN PROPOSED 30-INCH DI WATERLINE TO EXISTING 20-INCH WATERLINE. ABANDON EXISTING 12-INCH DI WATERLINE FROM STA. 2+41.66 TO STA. 9+84.03 AND STA. 18+58.41 TO STA. 25+97.58. CAP EXISTING CROSS TO THE SOUTH. ABANDON EXISTING 12-INCH PVC WATERLINE FROM STA. 1+34.67 TO STA. 2+41.66.



MATCHLINE THIS SHEET

LEGEND



Kimley»Horn
 Texas Registered Firm, No. 928
 601 NW Loop 410 Suite 350 Tel No. 210-541-9166
 San Antonio, TX 78216 Fax No. 210-541-8699

No.	Revision	By	Date
ADDENDUM NO. 3		MAV	9/21/2021

CANYON GOLF RD WATER MAIN EXTENSION PROJECT

SHEET

SUGGESTED CONSTRUCTION SEQUENCING

DATE: AUGUST 2021	SAWS PROJECT NO. 20-7004	SHEET NO. G8
DESIGN: MAV	KHA PROJECT NO. 068665058	
DRAWN: MMV		
CHECKED: JAF		

* ESTIMATED SHEET QUANTITIES			
ITEM NO.	DESCRIPTION	UNIT	QUANTITY
103.1	REMOVE CONCRETE CURB	LF	192
103.4	REMOVE MISCELLANEOUS CONCRETE	SF	459
202.1	PRIME COAT	GAL	8
203.1	TACK COAT	GAL	15
205.2	HOT MIX ASPHALTIC PAVEMENT, TYPE B (10" COMP. DEPTH)	SY	51
205.3	HOT MIX ASPHALTIC PAVEMENT, TYPE C (2" COMP. DEPTH)	SY	75
500.1	CONCRETE CURB	LF	192
504.1	CONCRETE MEDIAN	SY	51

*SEE NOTE 2

CHAMPIONS RIDGE 2B SUBDIVISION P.U.B.
VOLUME 9581, PAGE 151
O.P.R.B.C.T.

STA: 1+00
AFTER RELEASE FOR SERVICE
TIE-IN TO EXISTING 30" DI
WATERLINE
SEE SHEET C8, DETAIL 1
INSTALL:
(1) 30" CAST COUPLING
W/ISOLATION GASKET
(1) 2" COMBINATION AIR
RELEASE VALVE
(SEE SAWS DETAIL
DD-846-02)
(1) 4" TEMPORARY BLOW-
OFF ASSEMBLY
(SEE SAWS DETAIL
DD-844-04)
CONTRACTOR TO PROVIDE
THRUST BLOCKING
AT TIE-IN TO EXISTING MAIN
N = 13790044.96
E = 2134095.29

16" ELEC., GAS, TELE., C.A.TV.
EASEMENT VOL. 9581, PG. 151
D.P.R.B.C.T.

14" ELEC., GAS, TELE., C.A.TV.
EASEMENT
VOL. 9559, PG. 98
D.P.R.B.C.T.

BCAD ID No. 272418
KELLY LEIGH HARDWICK, TRUSTEE,
KELLY LEIGH HARDWICK 2012 TRUST
VOL. 15958, PG. 2358
O.P.R.B.C.T.

STA: 3+17.64
INSTALL:
(1) 30" X 12" TEE, MJ
RL = 29 LF
(1) 30" BUTTERFLY VALVE, MJ
RL = 207 LF
(SEE SAWS DETAIL
DD-830-02)
(1) 12" GATE VALVE, MJ
(SEE SAWS DETAIL
DD-828-01)
(1) 6" VALVE BOX, COMPLETE
(1) 2" TEMPORARY BLOW-OFF
ASSEMBLY
(SEE SAWS DETAIL
DD-841-01)
Δ = 0' 33" 28" DN
N = 13790242.68
E = 2134181.78

STA: 3+17.64
AFTER RELEASE FOR SERVICE
TIE-IN PROPOSED 30-INCH DI
WATERLINE TO EXISTING
12-INCH DI WATERLINE
SEE SHEET C8, DETAIL 1
INSTALL:
(1) 12" CAST COUPLING
W/ISOLATION GASKET
+/- 20 LF 12" DI PIPE
N = 13790242.68
E = 2134181.78

STA: 1+62.54
INSTALL:
(1) 30" 22.5" BEND, MJ (LT)
RL = 19 LF
N = 13790097.77
E = 2134126.51

STA: 1+34.67
INSTALL:
(1) 30" 22.5" BEND, MJ (RT)
RL = 19 LF
N = 13790077.41
E = 2134107.47

5' ELEC., GAS, TELE.,
C.A.TV. EASEMENT
VOL. 9522, PG. 182
D.P.R.B.C.T.

10" ELEC., GAS, TELE.,
C.A.TV. EASEMENT
VOL. 9522, PG. 182
D.P.R.B.C.T.

16" ELEC., GAS, TELE.,
C.A.TV. EASEMENT
VOL. 9522, PG. 182
D.P.R.B.C.T.

9" ELEC., GAS, TELE., C.A.TV.
EASEMENT
VOL. 9573, PG. 29
D.P.R.B.C.T.

BCAD ID No. 1112809
LAS HACIENDAS OF
STONE OAK TOWNHOMES
VOL. 13570, PG. 106
O.P.R.B.C.T.

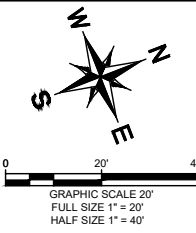
14" ELEC., GAS, TELE., C.A.TV.
EASEMENT
VOL. 9559, PG. 98
D.P.R.B.C.T.

14" ELEC., GAS, TELE., C.A.TV. (OCI: 80)
EASEMENT
VOL. 9573, PG. 29
D.P.R.B.C.T.

5' WATER EASEMENT
AS PER AS BUILT 06-1171

NOTES:

- CONTRACTOR SHALL NOTE, EXISTING FIBER OPTIC LINES SHOWN IN PLANS WERE NOT SURVEYED. CONTRACTOR SHALL VERIFY LOCATION OF FIBER OPTIC LINES PRIOR TO EXCAVATING.
- CONTRACTOR SHALL NOTE, DEPTH OF LINE IS UNKNOWN. CONTRACTOR SHALL VERIFY DEPTH PRIOR TO EXCAVATING.



MATCHLINE STA. 4+00

ESTIMATED SHEET QUANTITIES			
ITEM NO.	DESCRIPTION	UNIT	QUANTITY
103.1	REMOVE CONCRETE CURB	LF	90
103.3	REMOVE CONCRETE SIDEWALKS AND DRIVEWAYS	SF	360
201.2	CEMENT TREATED BASE (6" COMP. DEPTH)	SY	39
203.1	TACK COAT	GAL	116
205.2	HOT MIX ASPHALTIC PAVEMENT, TYPE B (10" COMP. DEPTH)	SY	250
205.3	HOT MIX ASPHALTIC PAVEMENT, TYPE C (2" COMP. DEPTH)	SY	909
208.1	SALVAGING, HAULING, AND STOCKPILING RECLAIMABLE ASPHALTIC PAVEMENT (2" DEPTH)	SY	544
413.2	FLOWABLE FILL (LOW STRENGTH)	CY	38
500.1	CONCRETE CURB	LF	90
502.1	CONCRETE SIDEWALKS	SY	40
515.1	TOPSOIL (4" DEPTH)	CY	35
520.1	HYDROMULCHING	SY	315
535.2	4" WIDE WHITE LINE	LF	215
537.8	PAVEMENT MARKER (TYPE II-A-A)	EA	4
550	TRENCH EXCAVATION SAFETY PROTECTION	LF	320
814	12" DI CLASS 350 (DIPS) WATERLINE (ALL DEPTHS)	LF	20
814	30" DI CLASS 200 (DIPS) WATERLINE (ALL DEPTHS)	LF	300
828	12" GATE VALVE CLASS 200	EA	1
830	30" BUTTERFLY VALVE CLASS 250	EA	1
834.1	FIRE HYDRANT	EA	1
836	DUCTILE IRON FITTINGS, ALL SIZES AND TYPES	TN	5
840	12" WATER TIE-IN	EA	1.0
840	30" WATER TIE-IN	EA	1
844.7.2	2" BLOW-OFF, TEMPORARY	EA	1
844.7.2	4" BLOW-OFF, TEMPORARY	EA	1
846	2" COMBINATION AIR RELEASE VALVE ASSEMBLY	EA	1

LEGEND

FULL SIZE (22" x 34")
1" = 5' VERTICAL

HALF SIZE (11" x 17")
1" = 10' VERTICAL

PROPOSED WATERLINE WITH VALVE	
PROPOSED TEMPORARY WATERLINE	
PROPOSED FIRE HYDRANT	
PROPOSED AREA TO BE MILL/OVERLAY	
EXISTING SIDEWALK/DRIVEWAY TO BE REMOVED & REPLACED	
EXISTING WATER LINE WITH VALVE	
EXISTING GAS LINE	
PROPERTY LINE	
EXISTING UNDERGROUND FIBER OPTIC	
EXISTING FENCE	
EXISTING PAVEMENT MARKINGS	
EXISTING SIDEWALK	
EXISTING EASEMENT LINE	
EXISTING WATER METER	
EXISTING FIRE HYDRANT	
EXISTING OVERHEAD ELECTRIC LINE & PP	
EXISTING OVERHEAD FIBER OPTIC	




Kimley»Horn

Texas Registered Firm, No. 928

601 NW Loop 410 Suite 350 San Antonio, TX 78216

Tel No. 210-541-9166 Fax No. 210-541-8699

No.	Revision	By	Date
ADDENDUM NO. 3		MAV	9/21/2021



SAN ANTONIO WATER SYSTEM

CANYON GOLF RD WATER MAIN EXTENSION PROJECT

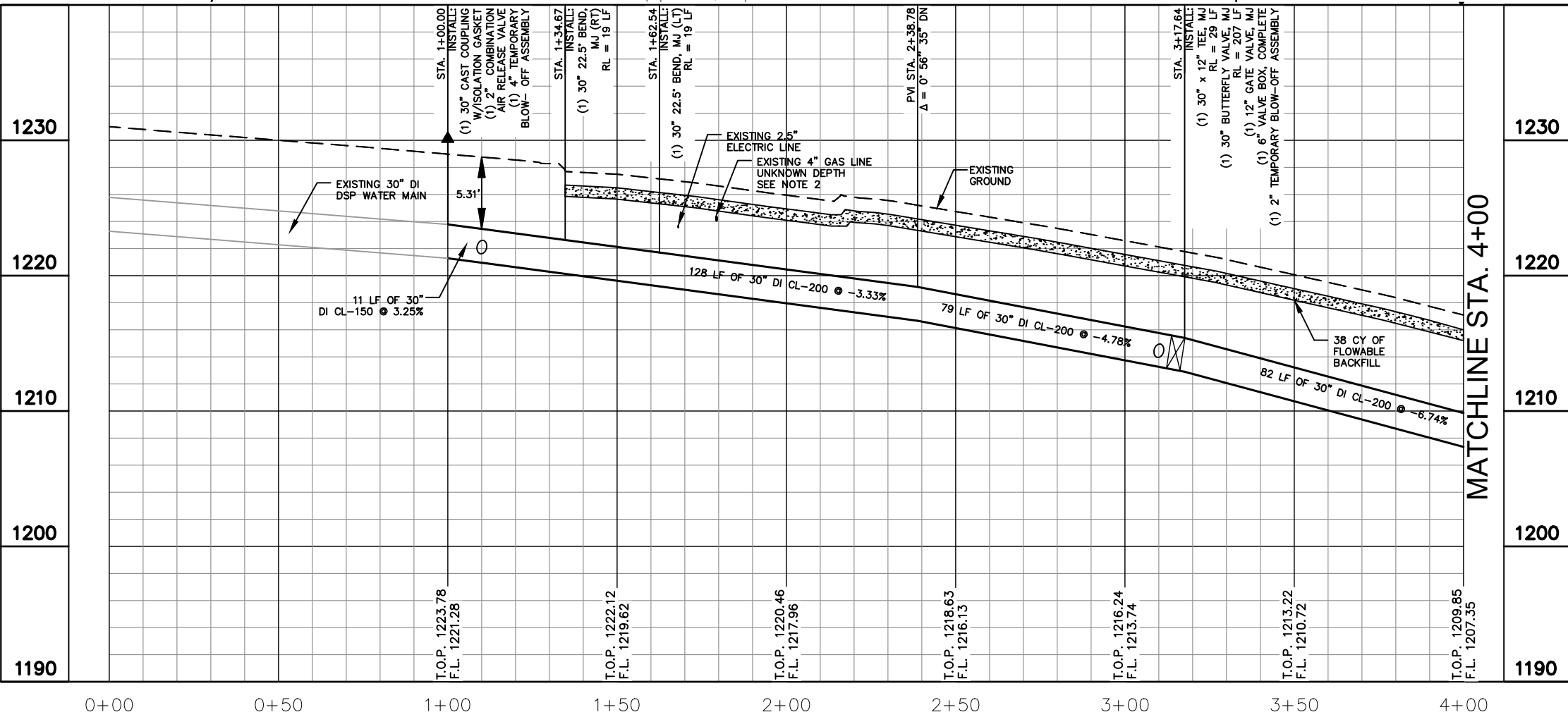
SHEET

WATERLINE PLAN & PROFILE START TO STA. 4+00

DATE: AUGUST 2021	SAWS PROJECT NO. 20-7004	SHEET NO. C1
DESIGN: MAV	KHA PROJECT NO. 068665058	
DRAWN: MMV		
CHECKED: JAF		

1240

1240



MATCHLINE STA. 4+00

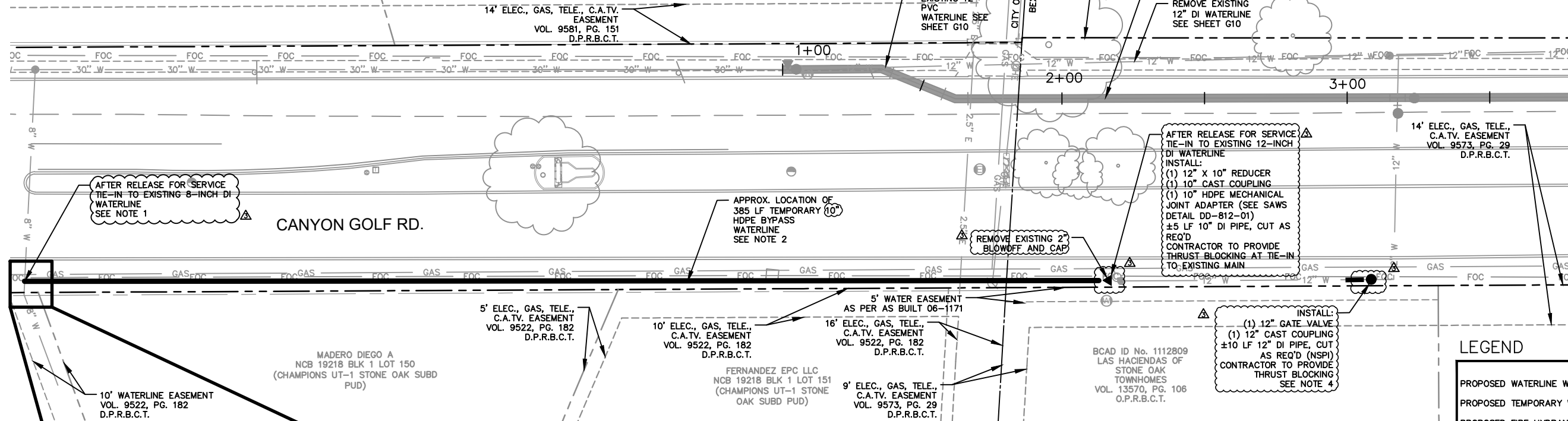
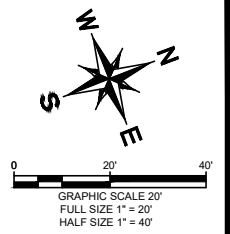
LAREDO KAMARY PROPERTIES LTD
NCB 19217 BLOCK 7 LOT 6

CHAMPIONS RIDGE 2B SUBDIVISION P.U.B.
VOLUME 9581, PAGE 151
O.P.R.B.C.T.

16' ELEC., GAS, TELE., C.A.TV. EASEMENT
VOL. 9581, PG. 151
D.P.R.B.C.T.

14' ELEC., GAS, TELE., C.A.TV. EASEMENT
VOL. 9559, PG. 98
D.P.R.B.C.T.

BCAD ID No. 272418
KELLY LEIGH HARDWICK, TRUSTEE,
KELLY LEIGH HARDWICK 2012 TRUST
VOL. 15958, PG. 2358
O.P.R.B.C.T.



AFTER RELEASE FOR SERVICE
TIE-IN TO EXISTING 8-INCH DI
WATERLINE
SEE NOTE 1

CANYON GOLF RD.

APPROX. LOCATION OF
385 LF TEMPORARY 10"
HDPE BYPASS
WATERLINE
SEE NOTE 2

AFTER RELEASE FOR SERVICE
TIE-IN TO EXISTING 12-INCH
DI WATERLINE
INSTALL:
(1) 12" X 10" REDUCER
(1) 10" CAST COUPLING
(1) 10" HDPE MECHANICAL
JOINT ADAPTER (SEE SAWS
DETAIL DD-812-01)
±5 LF 10" DI PIPE, CUT AS
REQ'D
CONTRACTOR TO PROVIDE
THRUST BLOCKING AT TIE-IN
TO EXISTING MAIN

14' ELEC., GAS, TELE.,
C.A.TV. EASEMENT
VOL. 9573, PG. 29
D.P.R.B.C.T.

10' WATERLINE EASEMENT
VOL. 9522, PG. 182
D.P.R.B.C.T.

MADERO DIEGO A
NCB 19218 BLK 1 LOT 150
(CHAMPIONS UT-1 STONE OAK SUBD
PUD)

5' ELEC., GAS, TELE.,
C.A.TV. EASEMENT
VOL. 9522, PG. 182
D.P.R.B.C.T.

10' ELEC., GAS, TELE.,
C.A.TV. EASEMENT
VOL. 9522, PG. 182
D.P.R.B.C.T.

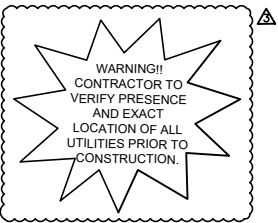
16' ELEC., GAS, TELE.,
C.A.TV. EASEMENT
VOL. 9522, PG. 182
D.P.R.B.C.T.

5' WATER EASEMENT
AS PER AS BUILT 06-1171

BCAD ID No. 1112809
LAS HACIENDAS OF
STONE OAK
TOWNHOMES
VOL. 13570, PG. 106
O.P.R.B.C.T.

9' ELEC., GAS, TELE.,
C.A.TV. EASEMENT
VOL. 9573, PG. 29
D.P.R.B.C.T.

INSTALL:
(1) 12" GATE VALVE
(1) 12" CAST COUPLING
±10 LF 12" DI PIPE, CUT
AS REQ'D (NSPI)
CONTRACTOR TO PROVIDE
THRUST BLOCKING
SEE NOTE 4



AFTER RELEASE FOR SERVICE
TIE-IN TO EXISTING 8-INCH DI
WATERLINE
SEE NOTE 1

INSTALL:
(1) 8" X 8" TEE, MJ
(2) 8" GATE VALVES
(1) 10" HDPE MECHANICAL
JOINT ADAPTER (SEE SAWS
DETAIL DD-812-01)
CONTRACTOR TO PROVIDE
THRUST BLOCKING AT TIE-IN
TO EXISTING MAIN

TEMPORARY 10" HDPE
WATERLINE
INSTALL:
(1) 10" CAST COUPLING
W/ISOLATION GASKET
(1) 10" X 8" REDUCER, MJ
±5 LF 8" DI PIPE, CUT AS
REQ'D (NSPI)

INSTALL:
(1) 8" CAST COUPLING
W/ISOLATION GASKET
±5 LF 8" DI PIPE,
CUT AS REQ'D (NSPI)

INSTALL:
(1) 8" CAST COUPLING
W/ISOLATION GASKET
±5 LF 8" DI PIPE,
CUT AS REQ'D (NSPI)

INSTALL:
(1) 10" HDPE MECHANICAL
JOINT ADAPTER
±5 LF 10" DI PIPE,
CUT AS REQ'D (NSPI)

ESTIMATED SHEET QUANTITIES			
ITEM NO.	DESCRIPTION	UNIT	QUANTITY
SP815	10" TEMPORARY WATER MAIN	LF	385

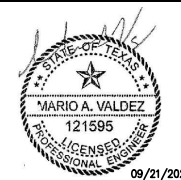
NOTES:

- TWO WEEKS PRIOR TO SHUTDOWN OF EXISTING 12" WATERLINE, CONTRACTOR IS TO NOTIFY SAWS ENGINEERING AND INSPECTIONS. CONTRACTOR SHALL INSTALL A 10" HDPE TEMPORARY WATERLINE TO MAINTAIN SERVICE TO RESIDENTS DURING CONSTRUCTION, PER SPECIFICATIONS 03100 AND 02620. THE LOCATION OF THIS TEMPORARY MAIN IS GENERALLY AS SHOWN. CONTRACTOR SHALL SUBMIT A PLAN DEPICTING THE ROUTE, MATERIALS, MEANS OF SERVICING WATER, AND MEANS OF PROTECTING WATER FROM VEHICULAR TRAFFIC BY INSTALLATION OF TEMPORARY CONCRETE BARRIERS ALONG EXPOSED TEMPORARY WATERLINE ALIGNMENT, ETC. THIS PLAN WILL BE SUBJECT TO APPROVAL BY SAWS AND THE DESIGN ENGINEER.
- TEMPORARY WATERLINE TO AVOID CONFLICTS WITH EXISTING ABOVE GROUND UTILITIES AND APPURTENANCES.
- ALL VALVES, FITTINGS, AND APPURTENANCES ARE SUBSIDIARY TO THE COST OF THE TEMPORARY WATERLINE.
- CONTRACTOR SHALL KEEP VALVE CLOSED DURING CONSTRUCTION TO PROVIDE SERVICE TO LAS HACIENDAS TOWNHOMES FROM 10" TEMPORARY WATERLINE.

LEGEND

FULL SIZE (22" x 34") 1" = 5' VERTICAL	HALF SIZE (11" x 17") 1" = 10' VERTICAL
---	--

PROPOSED WATERLINE WITH VALVE	
PROPOSED TEMPORARY WATERLINE	
PROPOSED FIRE HYDRANT	
PROPOSED AREA TO BE MILL/OVERLAY	
EXISTING SIDEWALK/DRIVEWAY TO BE REMOVED & REPLACED	
EXISTING WATER LINE WITH VALVE	
EXISTING GAS LINE	
PROPERTY LINE	
EXISTING UNDERGROUND FIBER OPTIC	
EXISTING FENCE	
EXISTING PAVEMENT MARKINGS	
EXISTING SIDEWALK	
EXISTING EASEMENT LINE	
EXISTING WATER METER	
EXISTING FIRE HYDRANT	
EXISTING OVERHEAD ELECTRIC LINE & PP	
EXISTING OVERHEAD FIBER OPTIC	



Kimley»Horn
Texas Registered Firm, No. 928
601 NW Loop 410 Suite 350 Tel No. 210-541-9166
San Antonio, TX 78216 Fax No. 210-541-8699

No.	Revision	By	Date
▲	ADDENDUM NO. 1	MAV	8/24/2021
▲	ADDENDUM NO. 3	MAV	9/21/2021



CANYON GOLF RD WATER
MAIN EXTENSION
PROJECT
SHEET
TEMPORARY 10-INCH
WATER BYPASS

DATE: AUGUST 2021	SAWS PROJECT NO. 20-7004	SHEET NO. C11
DESIGN: MAV	KHA PROJECT NO. 068665058	
DRAWN: MMV		
CHECKED: JAF		

PLOTTED BY: VARA, MIKAELA 9/21/2021 9:27 AM
 DWG NAME: KUSA UTILITIES\068665058\CAD\PLANS\15SHEET\TEMPORARY WATERLINE\068665058_RECOVERED.DWG
 PLOT DATE: 9/21/2021 4:42 PM